



**VERTEX**  
ENGI-MECH PVT. LTD.

Unit of  
**PRECISION INVESTMENT CASTING**  
**(LOST WAX CASTING PROCESS)**



## About Us :-

- Vertex Engi Mech Pvt Ltd is established in 2008, In 2022, a new management team take over foundry and built a strong reputation for precision, quality, and reliability in the field of investment casting.
- Today, we proudly serve a diverse range of sectors including automotive, aerospace, valve and pump manufacturing, general engineering, and more. Under the new leadership, we have expanded our production capacity, strengthened quality control systems, and invested in skilled talent and modern infrastructure to meet the growing demands of both domestic and international markets.
- Driven by a commitment to excellence, timely delivery, and customer satisfaction, we continue to evolve as a trusted partner for high-quality investment cast components.

## Vision :-

- To elevate the company's capabilities, adopt advanced technologies, and deliver superior value to our customers across industries.

## **Land & Building :-**

- Total Land Area : 1800 Sq. mtr
- Constructed Area : 1700 Sq. mtr
- Uncovered Area : 100 Sq. mtr

## **Facility & Infrastructure :-**

- Our foundry is equipped with two crucibles, each with a 300 kg pouring capacity, suitable for a wide range of steel and alloy castings.
- We have an in-house chemical and mechanical testing lab with spectrometer, tensile, hardness, and impact testing facilities to ensure material quality.
- The plant includes precision wax injection machines, a climate-controlled shell room, and complete fettling, finishing, and machining setups.
- With a streamlined layout and strong quality control, we deliver consistent, high-performance castings to meet industry demands.

## **Our Capacity :-**

- Production :- 720 Metric Tons/Annum
- Job Handling Capacity :- From a few grams to 110 kg. Single Piece.

## Material of Casting :-

- We specialize in investment casting of ferrous metals, particularly stainless steel in various grades such as CF8, CF8M, CF3, CF3M, and CA15. In addition, we offer casting solutions in a range of alloys, including nickel-based materials, ensuring high-quality components for diverse industrial applications.

## Quality Certification :-

- We are committed to maintaining the highest standards of quality and reliability. Our certifications include:
  - ✓ **ISO 9001:2015** – Certified by TUV SÜD for our robust Quality Management System
  - ✓ **PED 2014/68/EU** – Certified by TUV NORD for compliance with Pressure Equipment Directive standards
- These certifications reflect our dedication to consistent quality, customer satisfaction, and adherence to international manufacturing standards.

## **Why We are different ! :-**

- Continuous investment in advanced casting technology has made our foundry one of the most modern facilities in the industry.
- With the latest tooling and machinery, we are able to meet growing market demands while delivering products of the highest quality.
- Our ongoing process improvements and upgraded equipment help us increase productivity and reduce lead times consistently.
- We use only the finest raw materials to maintain the highest quality standards across every batch.
- Backed by over a decade of experience, our team combines technical expertise with cost-effective solutions—ensuring precise, reliable, and competitively priced investment castings from design to final application.

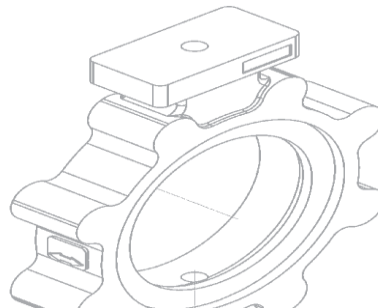
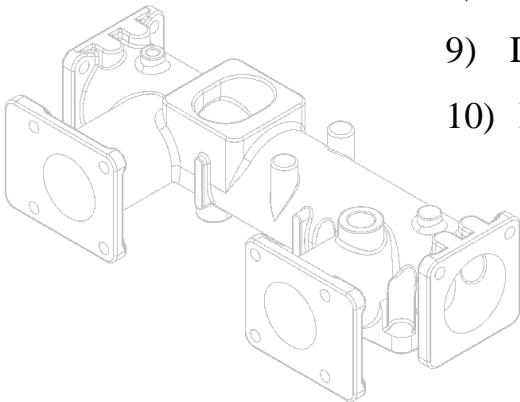
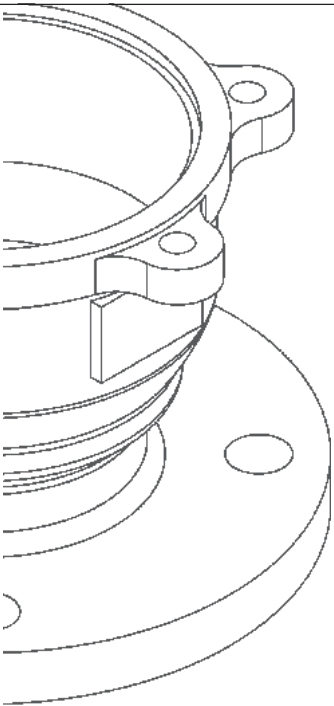
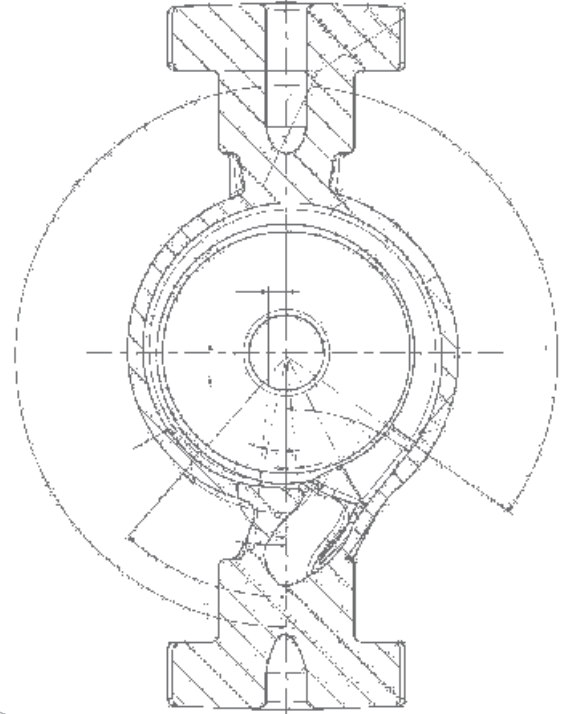
## **Sustainability :-**

- We believe in keeping our corporate sustainability in balance by taking into account our governance, environmental and social responsibilities.

## MARKET SEGMENT :-



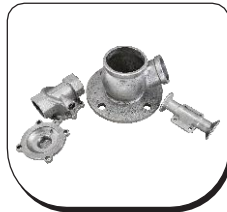
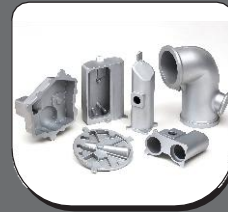
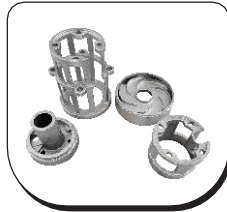
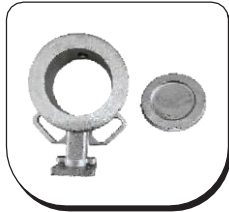
- 1) Industrial Valve
- 2) Chemical Process Pump
- 3) Dairy Valve
- 4) Fire Fitting Valve
- 5) Architectural Hardware
- 6) Marine
- 7) Aerospace
- 8) Automobile
- 9) Defense
- 10) Railway



# PRODUCT GALIERY



**VERTEX**  
ENGI-MECH PVT. LTD.





## Office & Work :-

Plot No - G 1501 ,  
Road 'E' ,  
Gate No. 2,  
GIDC Metoda- 360021,  
Dist : Rajkot , Gujarat , India.

## E-mail :-

info@vertexcasting.com  
vertexengimech@gmail.com

## Web :-

www.vertexcasting.com

